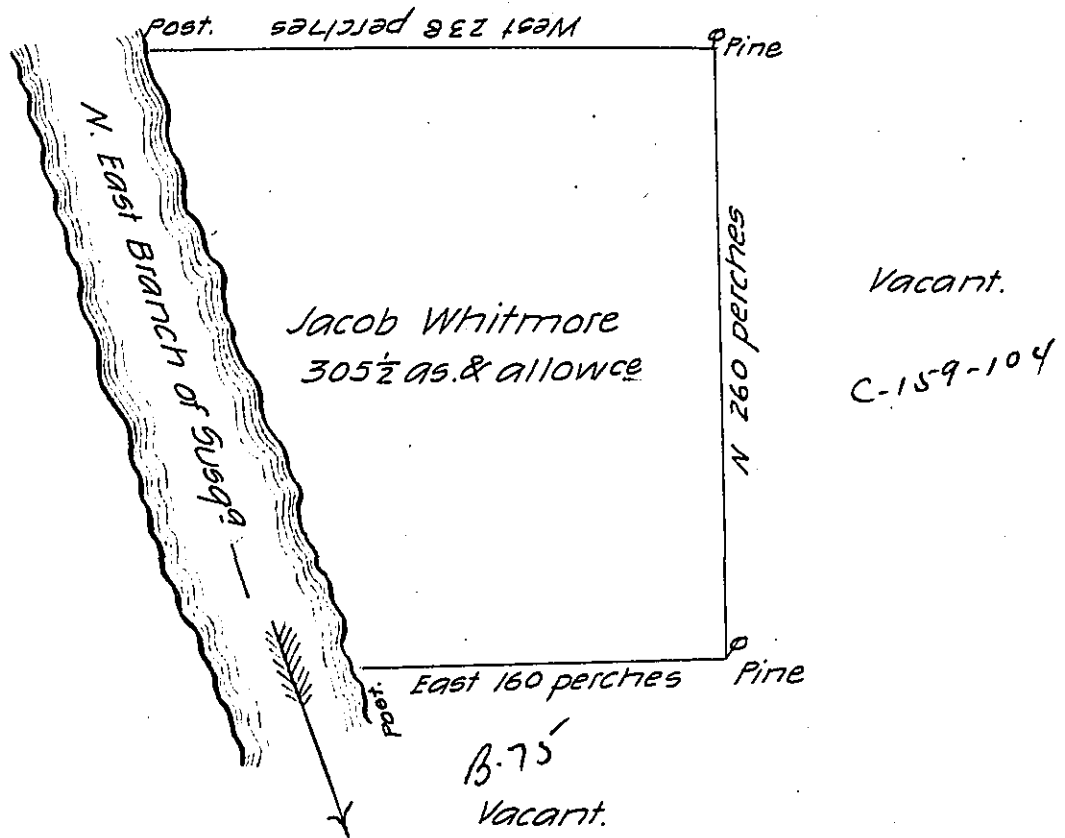


e-222-265

John Stoner.



A Draught of a tract of land called— Situate on the South East Side of the North East branch of Susquehanna River about two miles above the mouth of Tihoga in the County of Northumberland containing three hundred and five acres & a half besides the usual allowance of 6 P. Cent for Roads &c^{ts}. Surveyed the 23^d day of September 1773 for Jacob Whitmore, In pursuance of an order dated the 3^d day of April 1769 number 25

by

To John Lukens Esqr.

Chas^s Stewart DY Sur^t

Surveyr Gen^l



In Testimony that the above is a Copy of the original remaining filed in the Surveyor Generals Office, I have hereunto set my hand and the Seal of the said Office at Harrisburg the 11th March 1814.

Rich^d T. Leech S.G.

IN TESTIMONY that the above is a copy of the original remaining on file in the Department of Internal Affairs of Pennsylvania, made conformably to an Act of Assembly approved the 16th day of February, 1833, I have hereunto set my Hand and caused the Seal of said Department to be affixed at Harrisburg, this sixteenth day of April 1906

Isaac R. Brown
Secretary of Internal Affairs.